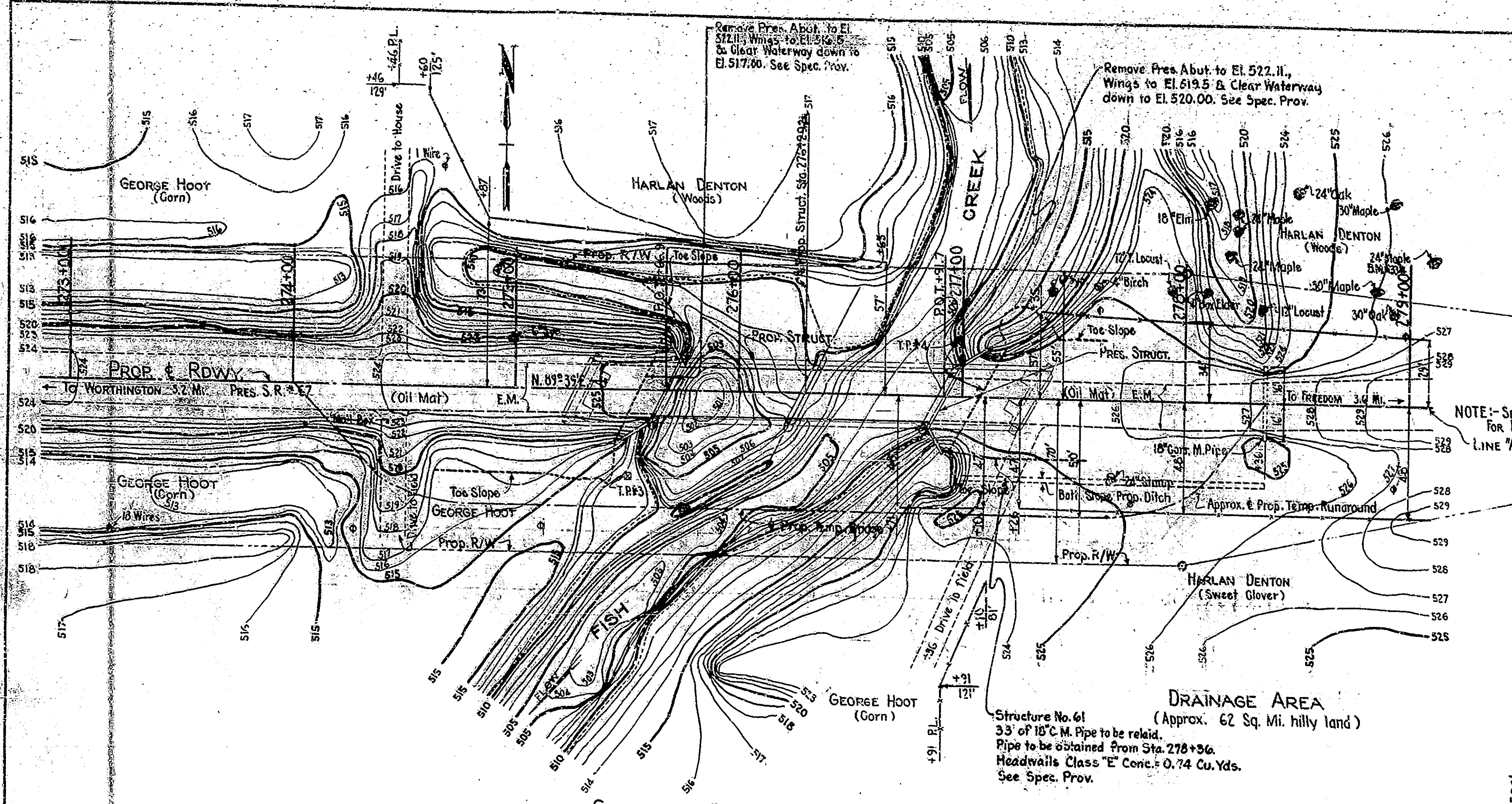
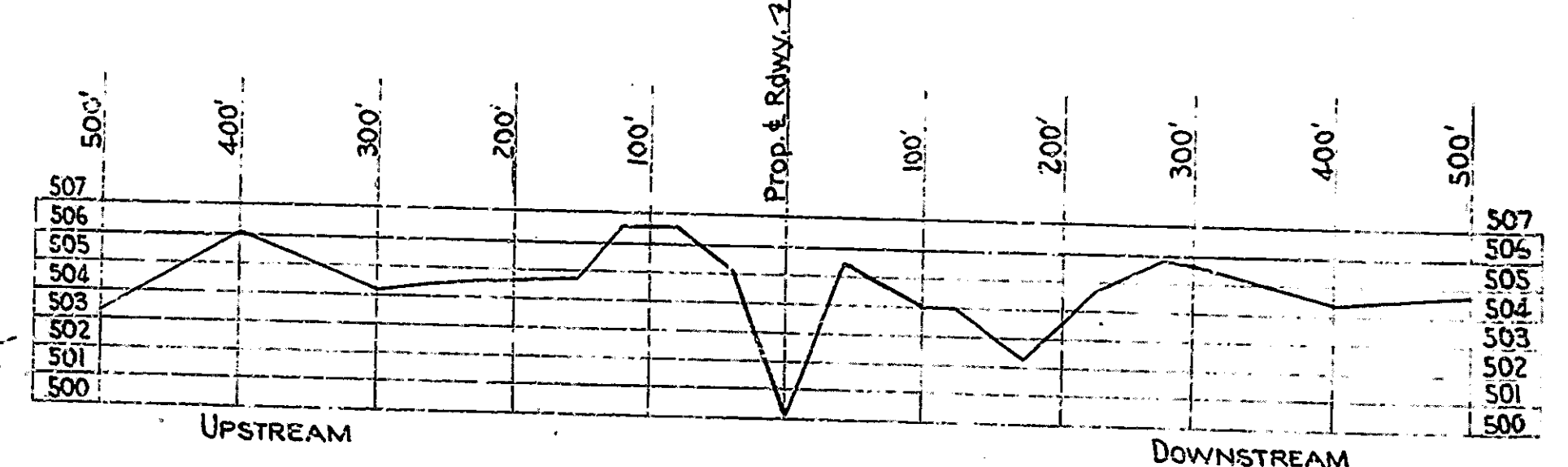


BRIDGES OVER 20' SPAN					
YEAR	STATE	NO. OF BRIDGES	LENGTH	AREA	VALUE
7	IND.	135	1934	7	25

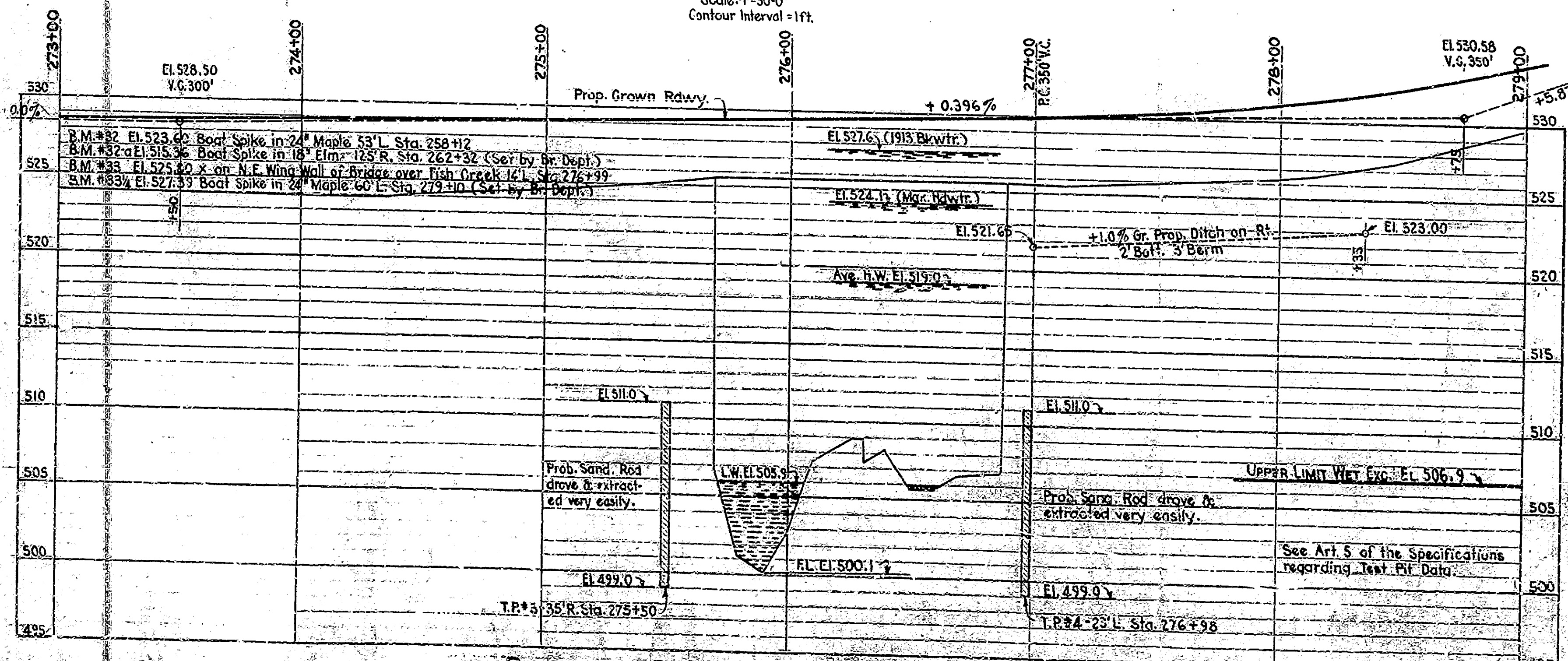


NOTE:- SEE ROAD PLAN FOR REFERENCES. LINE "A"

NOTE:- PRESENT STRUCTURE IS TWO SPANS @ 60'-0" EACH STEEL TRUSS. BUILT IN 1924 BY I.S.H.C. AS S. 12-6-176. 19'-3" CLEAR ROADWAY. STRUCTURE IN GOOD CONDITION. See General Plan and Substructure Details (Drwgs. 52, 53, & 54). Superstructure Details on file in Bridge Office (Structural Steel) Wt. = 20.95 Tons Approx. Each Span



PROFILE OF STREAM
Scale:- Hor. 1"=100'-0"; Vert. 1"=5'-0"



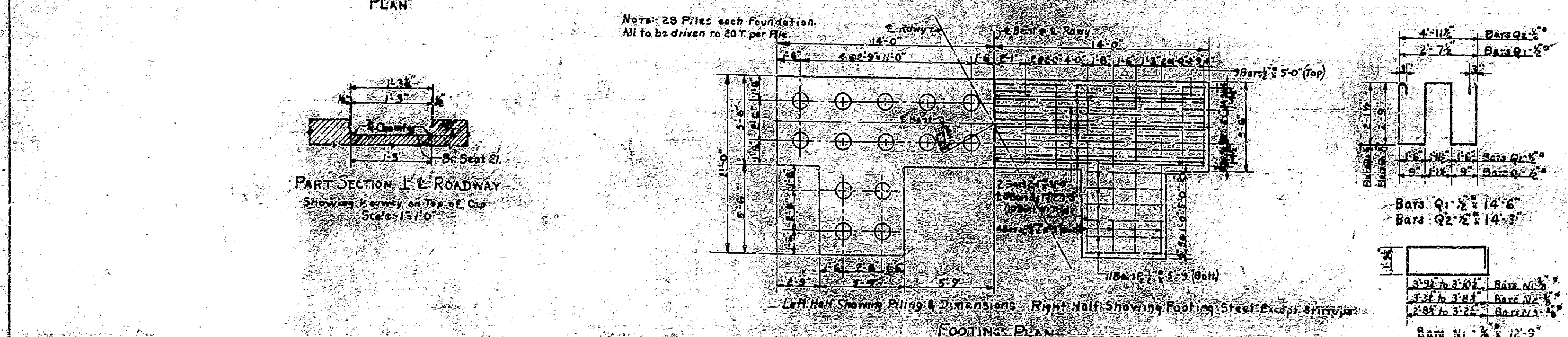
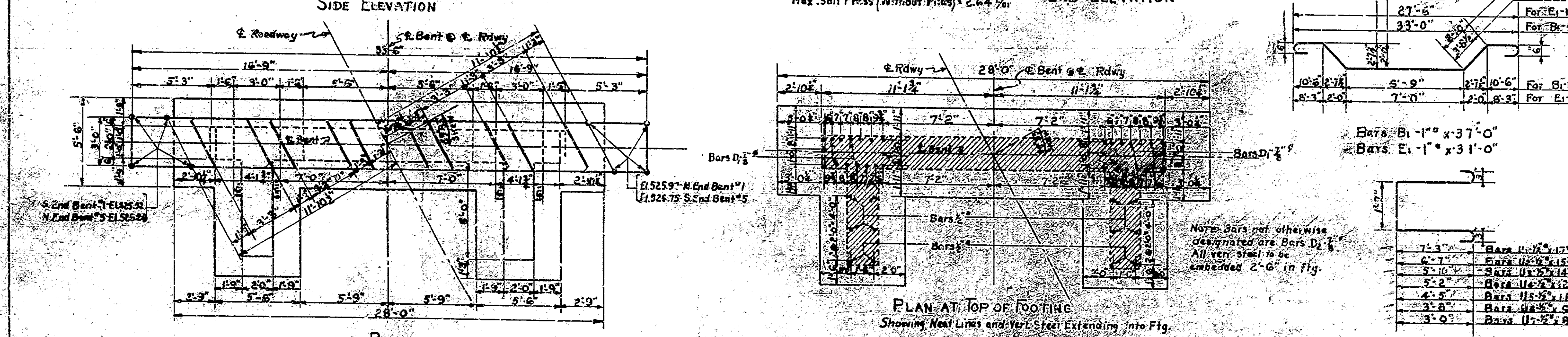
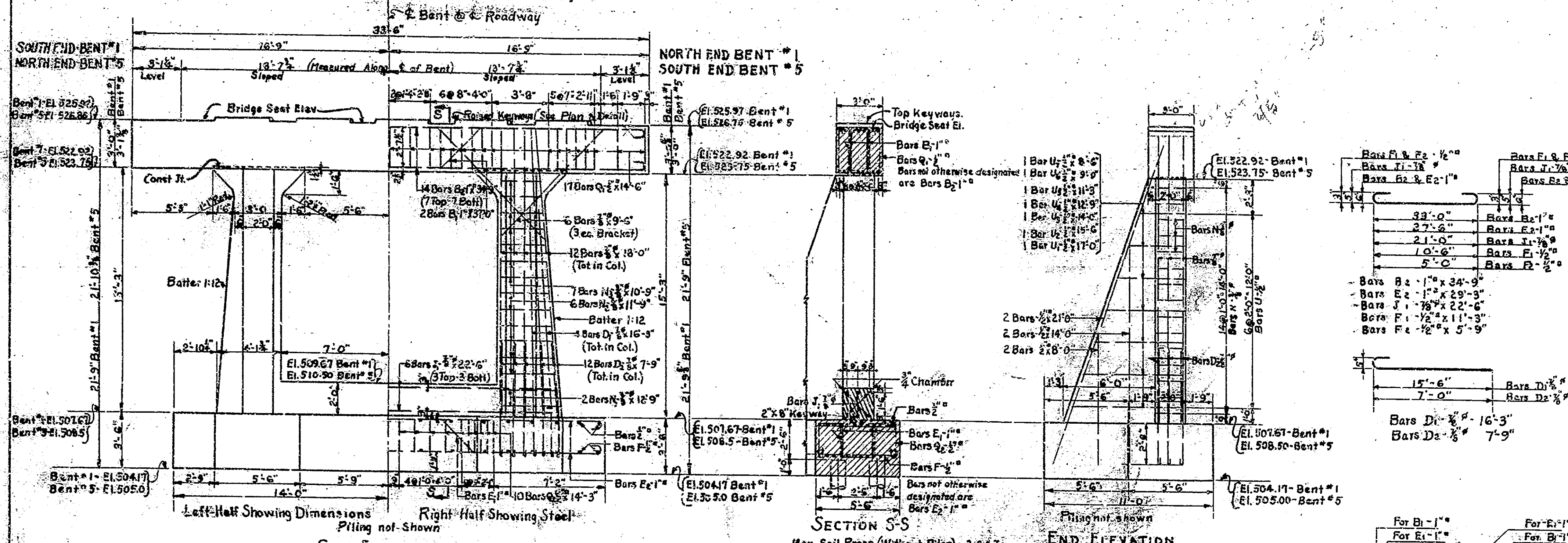
PROFILE ON PROPOSED & ROADWAY
Scale:- Hor. 1"=30'-0"; Vert. 1"=5'-0"

NOTE:- THIS IS STRUCTURE NO. 2 ON ROAD PROJ. N.R. 1135-B. SEE SHEET NO. 13 OF ROAD PLANS FOR GRADE LINE, BENCH MARKS & REFERENCES.

LAYOUT
STEEL BEAM
AND
REINFORCED CONCRETE BRIDGE
4 SPANS - 10'36" R.C.G. 22'5"4" ST. B.M. 10'36" R.C.G. SK. 2'33"R. 24'-0" ROADWAY OVER FISH CREEK ON STATE ROAD - 67-E
INDIANA STATE HIGHWAY COMMISSION
OWEN COUNTY

SCALE:- AS NOTED
RECOMMENDED FOR APPROVAL:
PROJECT: N.R. 1135
SECTION: B
DRAWING: 51 OF 2
STATION: - 276+29.2±
MAY 10, 1934
STRUCTURE NO. 176A
BRIDGE CONTRACT NO. 899

NOTE: Every Line on Top of Cap Parallel to E. Rdwy. to be Horizontal



BILL OF MATERIALS
 BENT NO. 1 (BENT NO. 5 SAME)

REINFORCING STEEL						
Mark	No.	Size	Length	Location	Total Length	Weight
B1	2	1"	37'-0"	Longt. Cap (Bent)	74'-0"	
B2	14	"	34'-9"	" (7 Top, 7 Bot)	486'-6"	
E1	2	"	31'-0"	Ftg (Bent)	62'-0"	
E2	20	"	29'-3"	" (10 Top, 10 Bot)	585'-0"	
Total 1" Bars					1207'-6"	4,154 #
	2.4	7/8"	18'-0"	Vert. Coils. (12 ea.)	432'-0"	
	12	"	9'-6"	Diagonal Brackets (3 ea.)	114'-0"	
D1	8	"	16'-3"	Vert. Coils. & Ftg (4 ea. Col.)	130'-0"	
D2	2.4	"	7'-9"	" (12 "	186'-0"	
J1	6	"	32'-6"	Longt. Strut (3 Top, 3 Bot)	195'-0"	
Total 7/8" Bars					997'-0"	2,064 #
	4	1/2"	21'-0"	Sloping Ft. Butts. (2 ea.)	84'-0"	
	4	"	14'-0"	Vert. Butts. & Ftg (2 ea.)	56'-0"	
	4	"	8'-0"	" " (2 ea.)	32'-0"	
	17	"	5'-0"	Transv. Bent Ftg. Top	85'-0"	
F1	8	"	11'-3"	" " Longt. Butt.	90'-0"	
F2	2.1	"	5'-9"	Ftg. Bot. (9 Bent, 12 Butts)	120'-9"	
Q1	3.3	"	14'-6"	Stirrups - Coy	478'-6"	
Q2	2.0	"	14'-3"	Ftg.	285'-0"	
U1	2	"	17'-0"	Horiz. Butts. & Coils. (1 ea.)	34'-0"	
U2	2	"	15'-6"	" " "	31'-0"	
U3	2	"	14'-0"	" " "	28'-0"	
U4	2	"	12'-9"	" " "	25'-6"	
U5	2	"	11'-3"	" " "	23'-6"	
U6	2	"	9'-9"	" " "	19'-6"	
U7	2	"	8'-6"	" " "	17'-0"	
Total 1/2" Bars					1408'-9"	1,212 #
N1	4	3/8"	12'-9"	Col. Ties (2 ea. Col.)	51'-0"	
N2	12	"	11'-9"	" (6 "	141'-0"	
N3	14	"	10'-9"	" (7 "	150'-6"	
Total 3/8" Bars					342'-6"	130 #
TOTAL STEEL						7,560 #

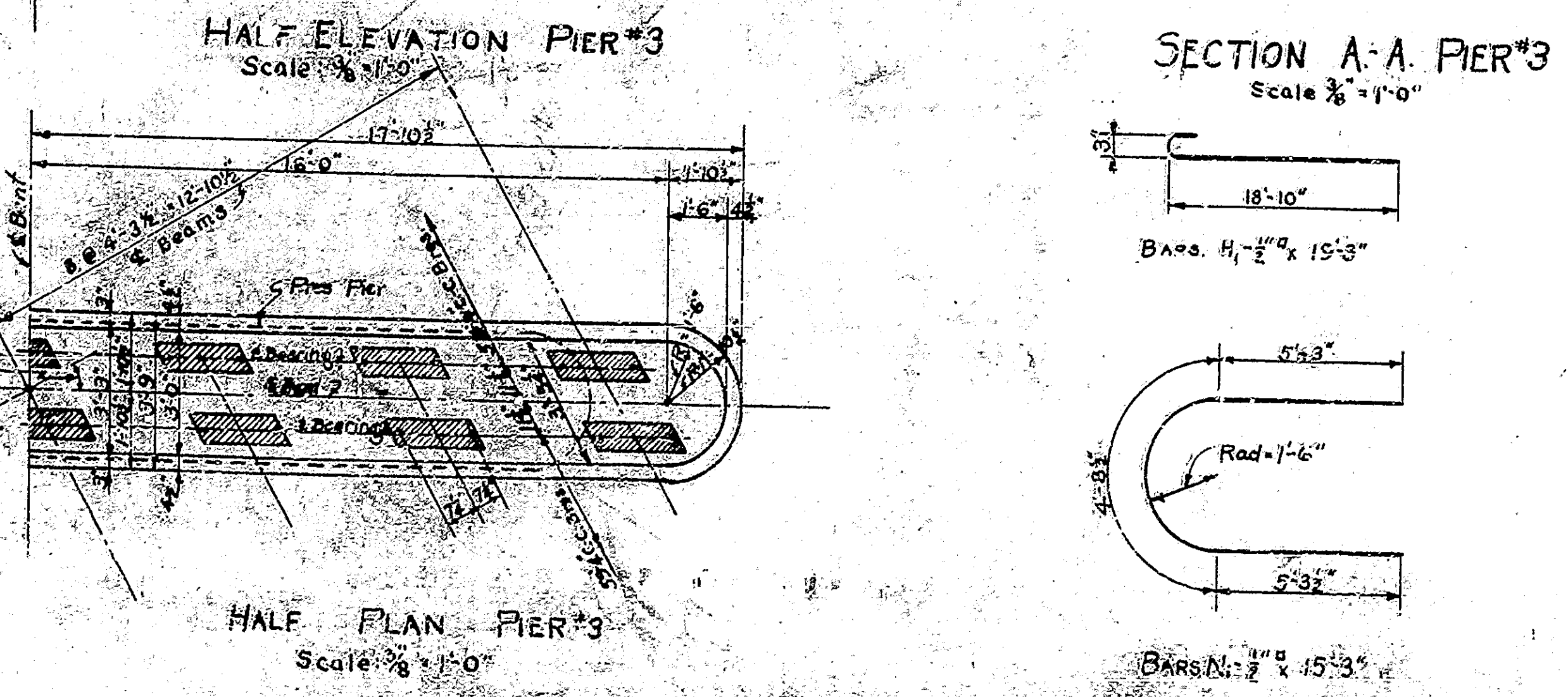
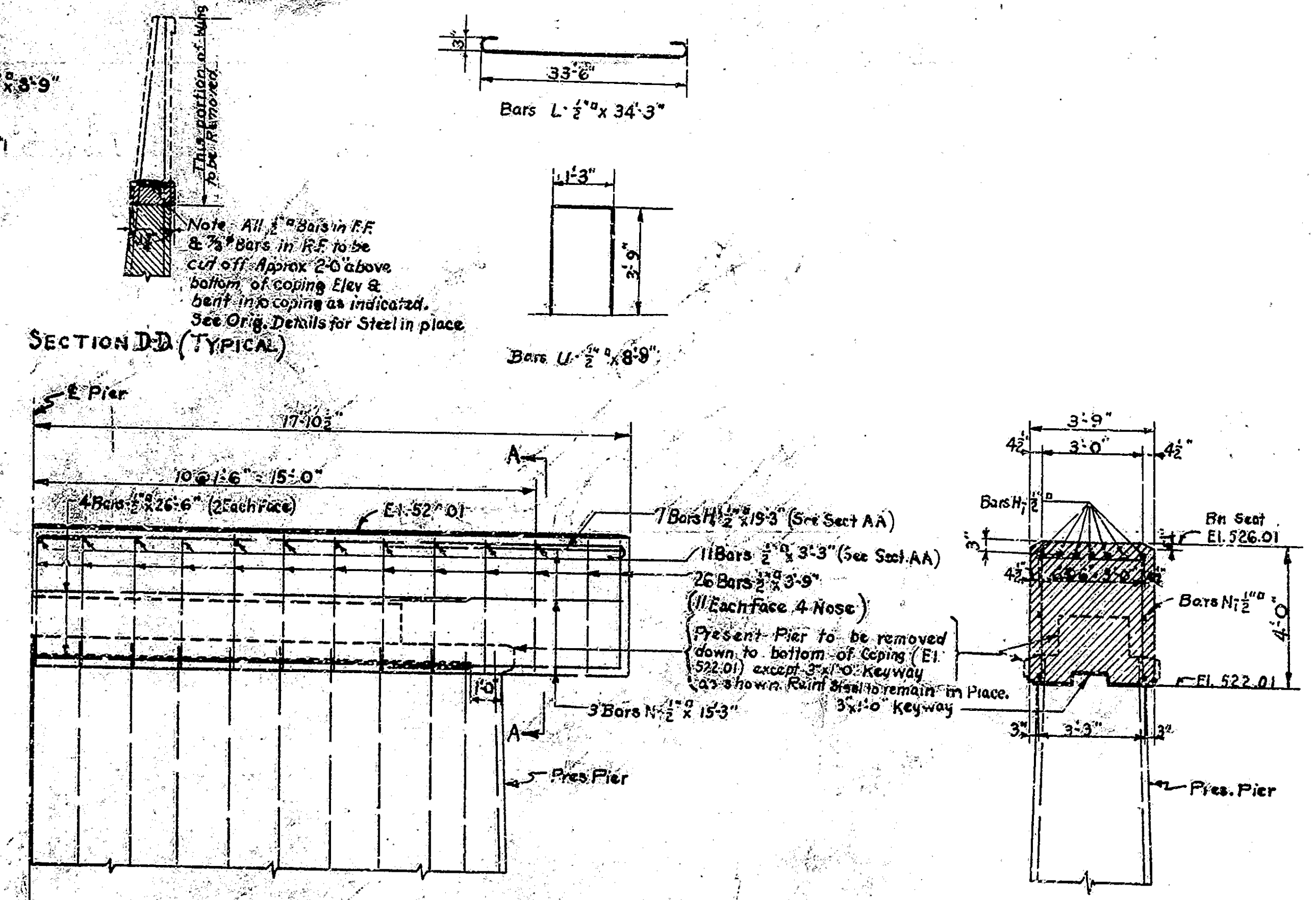
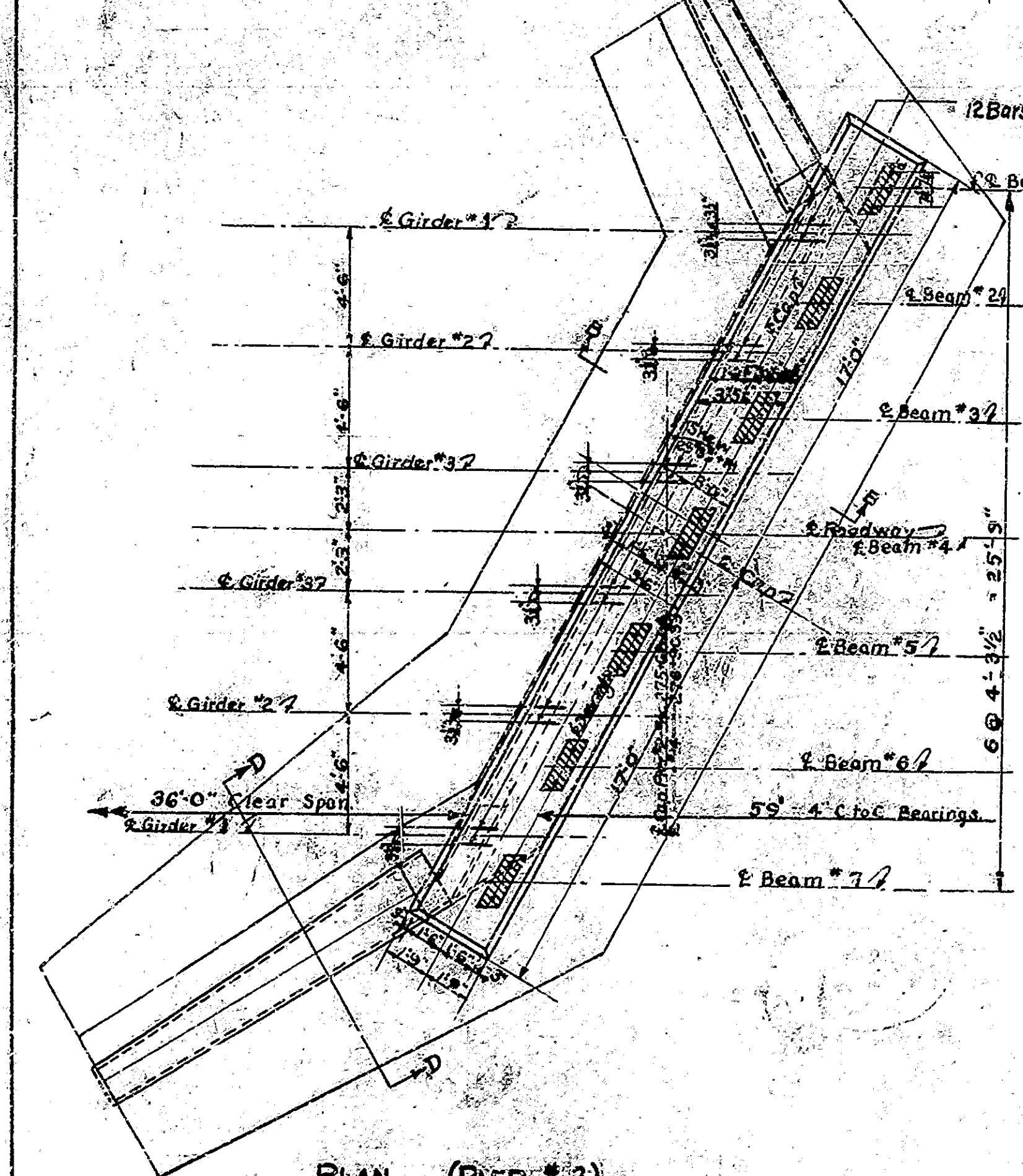
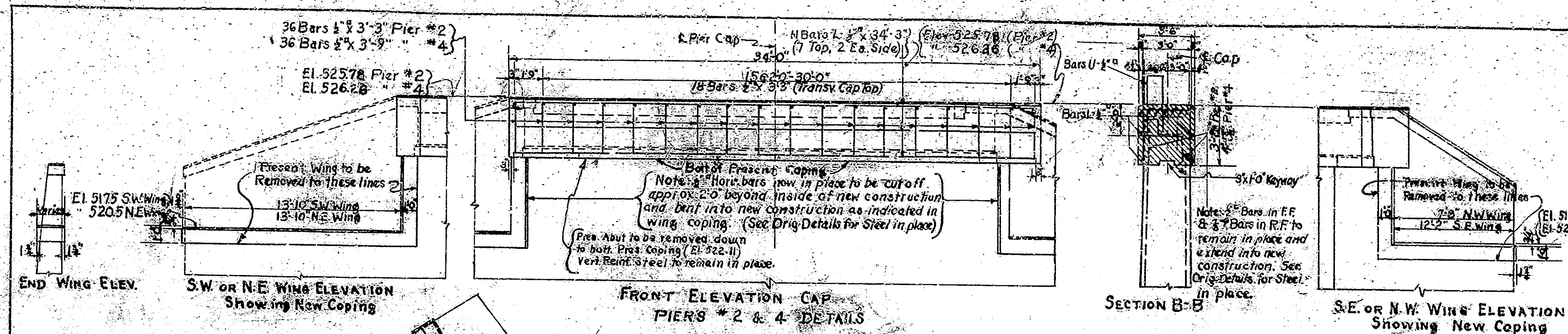
* Weights for 1920 Sids.

CONCRETE		
Class E - Footing		28.0 Cu. yd.
" " Above Ftg. up to Bot. of Cap Const. Ft.		17.5 "
" " Cap		12.0 "
Total Class E		57.5 "

MISCELLANEOUS	
28 Piles @ Approx 20' x 560 Lin. Ft.	

BENTS No. 1 & No. 5 DETAILS
STEEL BEAM
 AND
REINFORCED CONCRETE BRIDGE
 4 SPANS OVER FISH CREEK, STATION 276+29.21, 24'-0" ROADWAY
 OVER FISH CREEK ON STATE ROAD - 67-E
STATE HIGHWAY COMMISSION OF INDIANA
 OWEN COUNTY
 SCALE: 1" = 10' UNLESS NOTED
 RECOMMENDED FOR APPROVAL: *[Signature]* MAY 13, 1934
 PROJECT: N.R.H. 135 STATION: 276+29.21
 SECTION: 5 DRAWING: 55 OF 5 STRUCTURE NO. 17A
 BRIDGE CONTRACT NO. 899

DESIGNED BY: W. B. B. DRAWN BY: W. B. B. CHECKED BY: W. B. B. APPROVED BY: W. B. B.



**BILL OF MATERIALS
PIERS NO. 2 & 4**

REINFORCING STEEL							
Mark	No. Pcs	Size	Length	Location	Total Length	Weight	
36	12	3/4"	3'-9"	Vert. Cap. Pier #4	135'-0"		
72	"	3/4"	"	Long. Cap. Pier #4	234'-0"		
22	"	3/4"	3'-9"	Long. Cap. (11 Each)	753'-6"		
U 24	"	8'-9"	"	Anchor Bars for Girders	210'-0"		
TOTAL STEEL					1332'-6"	1146"	

CONCRETE		
Class	Volume	Weight
Class E' Cap	16.0	18.5
" Copings	2.5	2.0
Total Class E'	18.5	20.5

PIER NO. 3

REINFORCING STEEL							
Mark	No. Pcs	Size	Length	Location	Total Length	Weight	
4	1	1/2"	26'-6"	Long. Cap. (each face)	106'-0"		
50	"	3/4"	3'-9"	Vert. Cap. (each face)	153'-0"		
27	"	3/4"	3'-9"	Trans. Cap. (Top)	65'-0"		
H1	14	"	19'-3"	Horiz. Top Cap	269'-6"		
N1	6	"	15'-3"	Horiz. Noses (each)	91'-6"		
TOTAL STEEL					722'-6"	632"	

CONCRETE		
Class	Volume	Weight
Class E' Pier Cap.	19.5	19.5

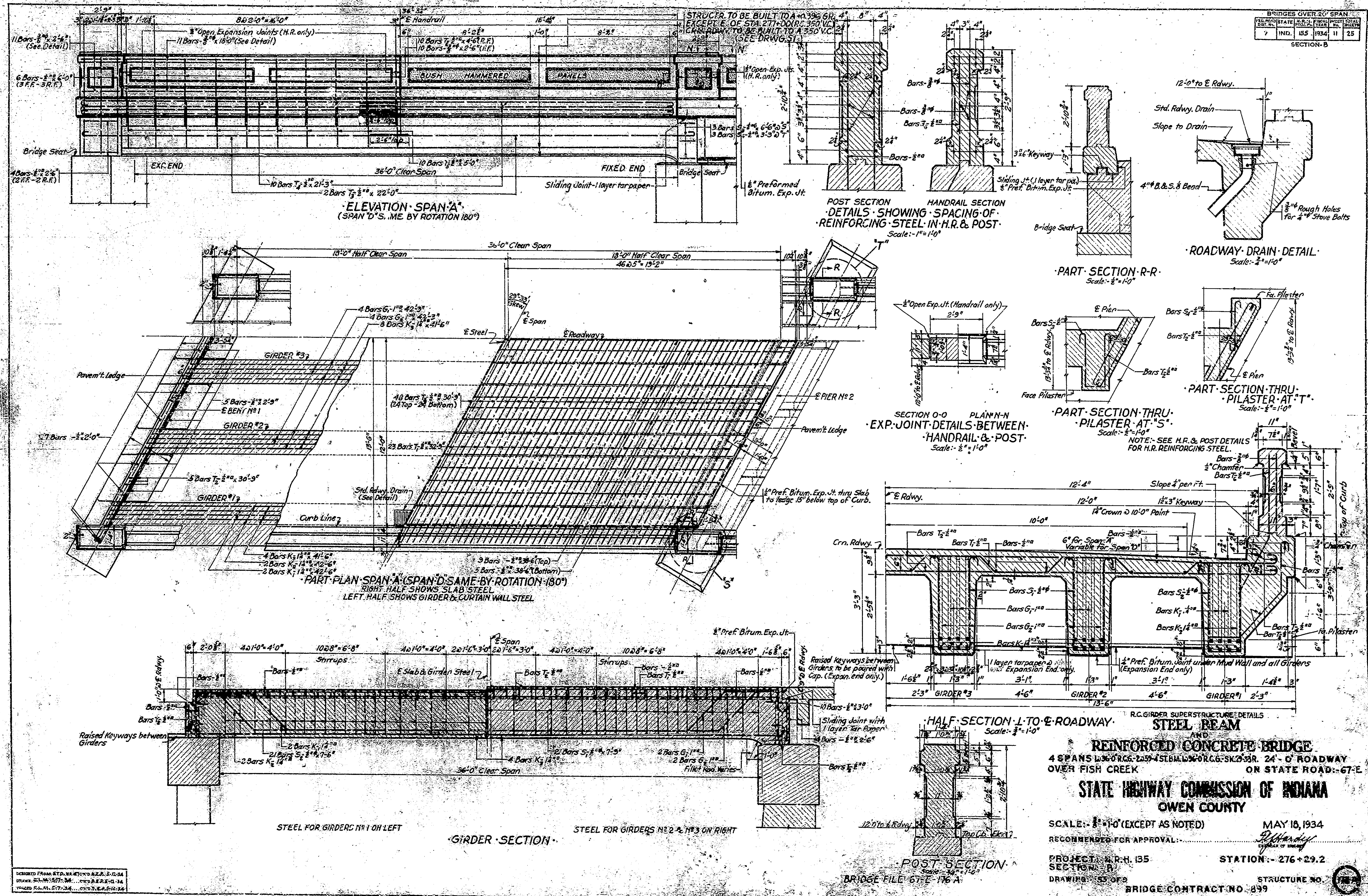
*Steel Weights for 1930 Sids.

**PIERS # 2 & 4 - DETAILS
STEEL BEAM**

REINFORCED CONCRETE BRIDGE
 4 SPANS 136'-0" R.C.G. - 255'-4" ST.BM. - 126'-0" R.C.G. - SK. 33'-0" RR 24'-0" ROADWAY
 OVER FISH CREEK ON STATE ROAD - 67-E

**STATE HIGHWAY COMMISSION OF INDIANA
OWEN COUNTY**

SCALE: 1/4" = 1'-0" (EXCEPT AS NOTED) MAY 18, 1934.
 RECOMMENDED FOR APPROVAL: [Signature]
 PROJECT: N.R.H. 135 STATION: -276+29.23
 SECTION: B DRAWING: S-4 OF 5 STRUCTURE NO. 176
 BRIDGE FILE 67-E-176A BRIDGE CONTRACT NO. 859



DESIGNED FROM RFD. DRAWING NO. 2-2-34
DRAWN BY: H. W. B. M. M. ... 2-2-34
CHECKED BY: M. E. ... 2-2-34

BRIDGES OVER 20' SPAN			
STATE	YEAR	NO.	TOTAL
IND.	1934	11	25

SECTION-B

NOTE: SEE H.R. & POST DETAILS FOR H.R. REINFORCING STEEL.

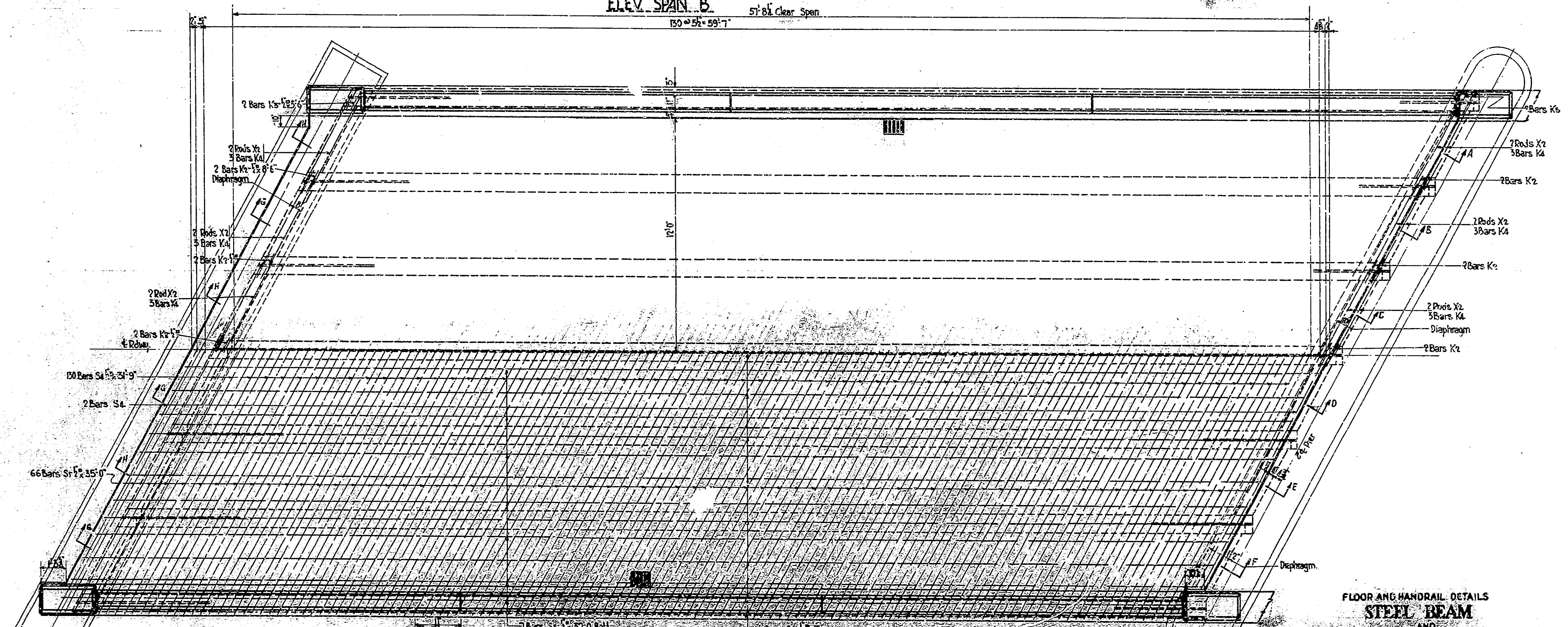
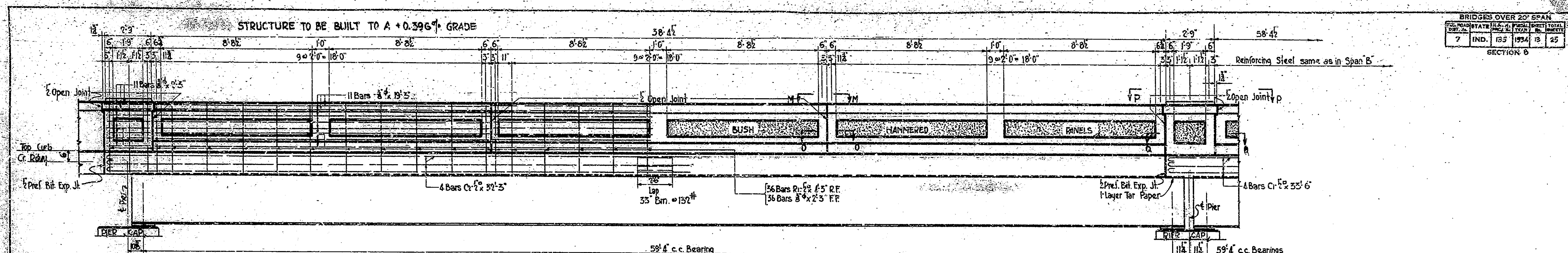
POST SECTION
Scale: 1/2" = 1'-0"

STEEL BEAM

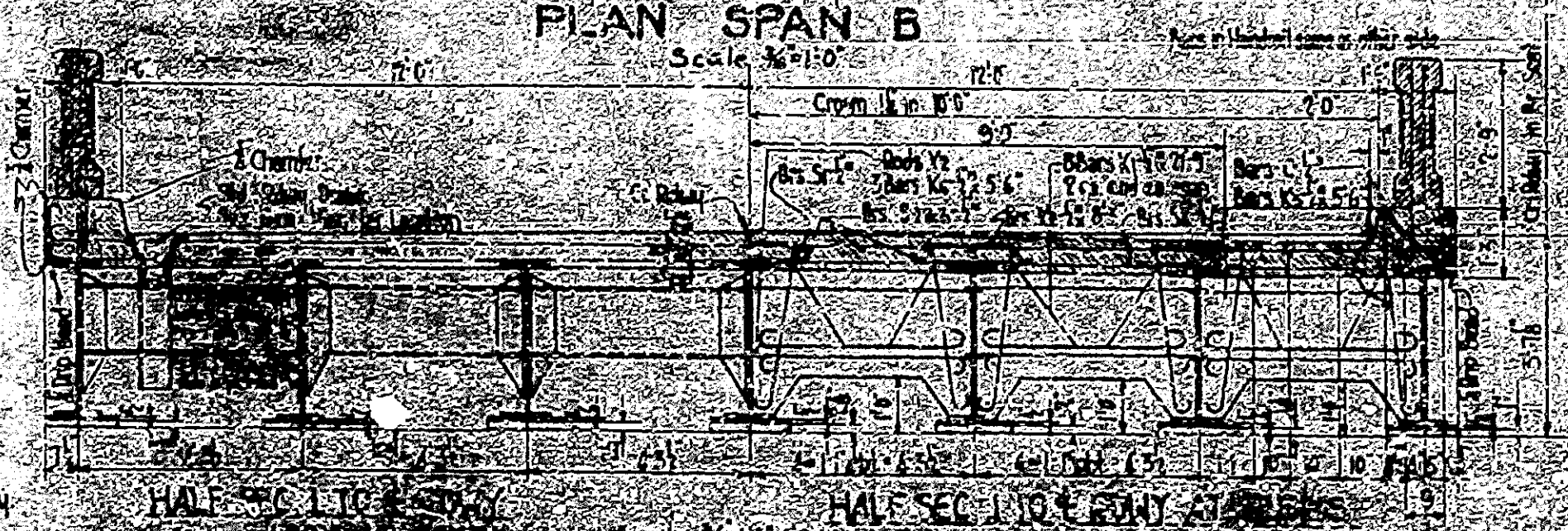
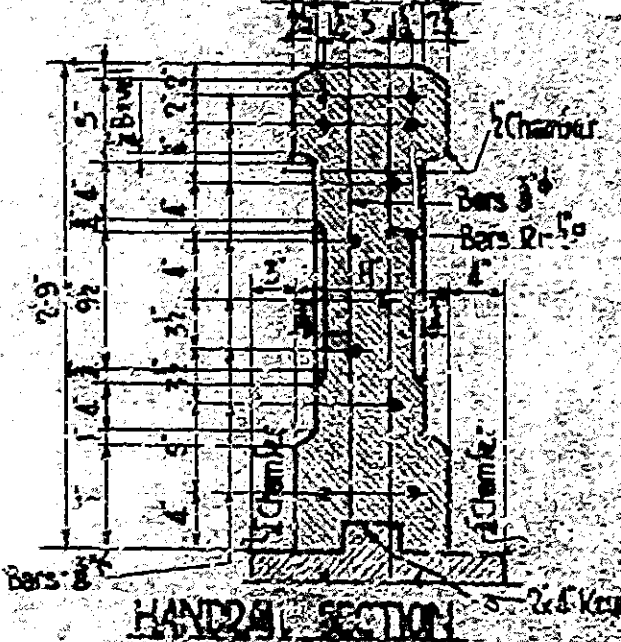
RAISED KEYWAYS BETWEEN GIRDERS TO BE PAIRED WITH CAP. (EXPAN. END ONLY)

11 LAYER TARPAPER @ EXPANSION END ONLY

1/2" PREF. BITUM. JOINT UNDER MUD WALL AND ALL GIRDERS (EXPANSION END ONLY)



HANDRAIL POST SECTION
 SEE DRWG. S5



FLOOR AND HANDRAIL DETAILS
 STEEL BEAM
 AND
 REINFORCED CONCRETE BRIDGE

43 SPARS 145' 0" C. & 43' 0" D. 145' 0" C. & 43' 0" D. 24' 0" ROADWAY
 OVER FISH CREEK ON STATE ROAD 67-E

STATE HIGHWAY COMMISSION OF INDIANA
 OWEN COUNTY

SCALE: 1/4" = 1'-0" (EXCEPT AS NOTED)

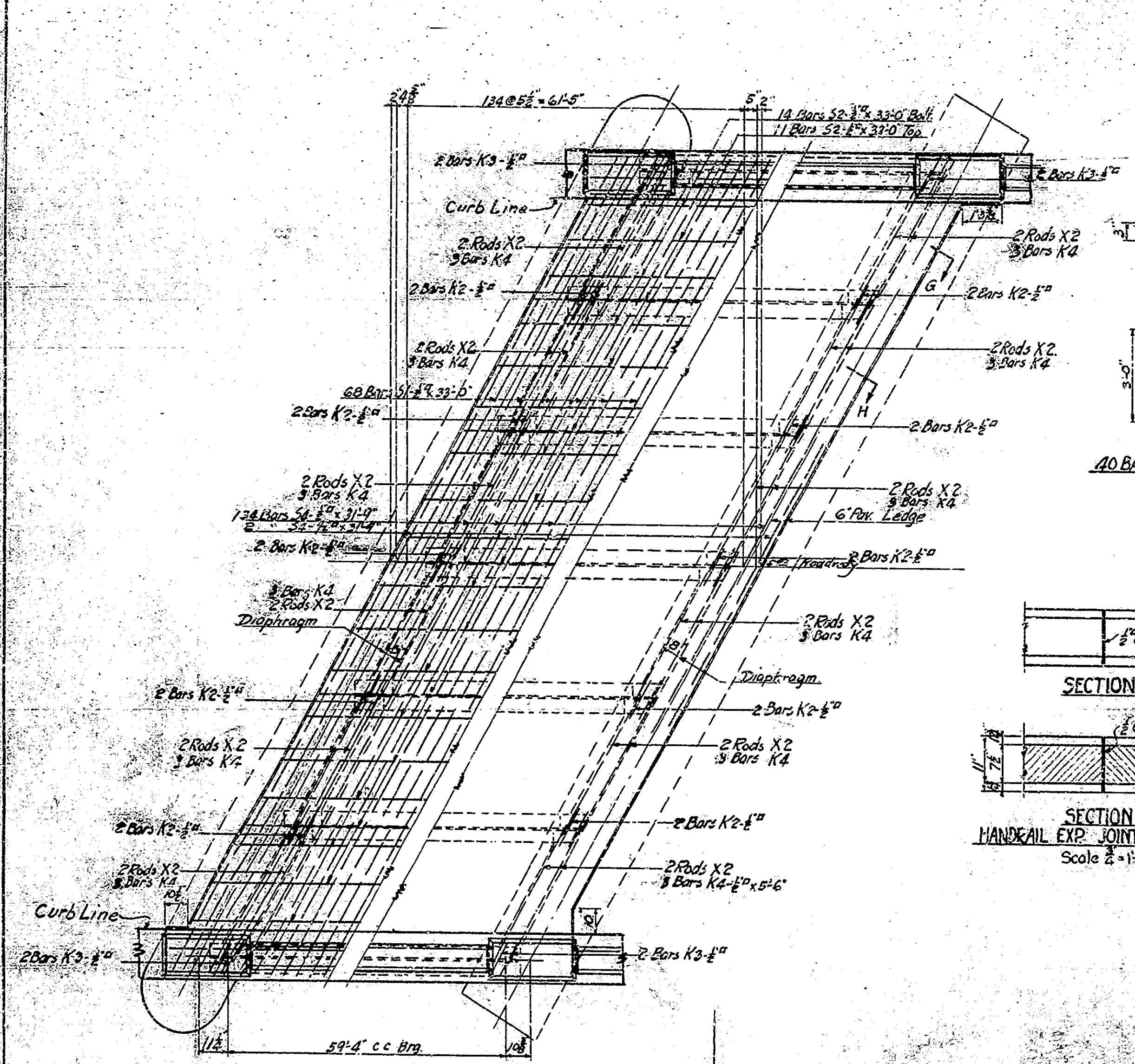
RECOMMENDED FOR APPROVAL

PROJECT: I.N.D.H. 135
 SECTION: B

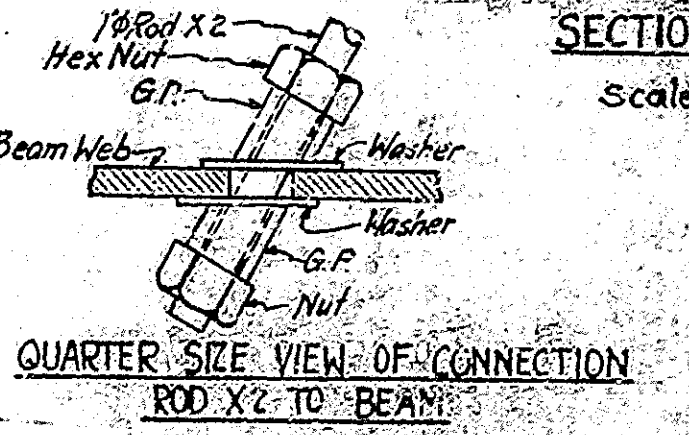
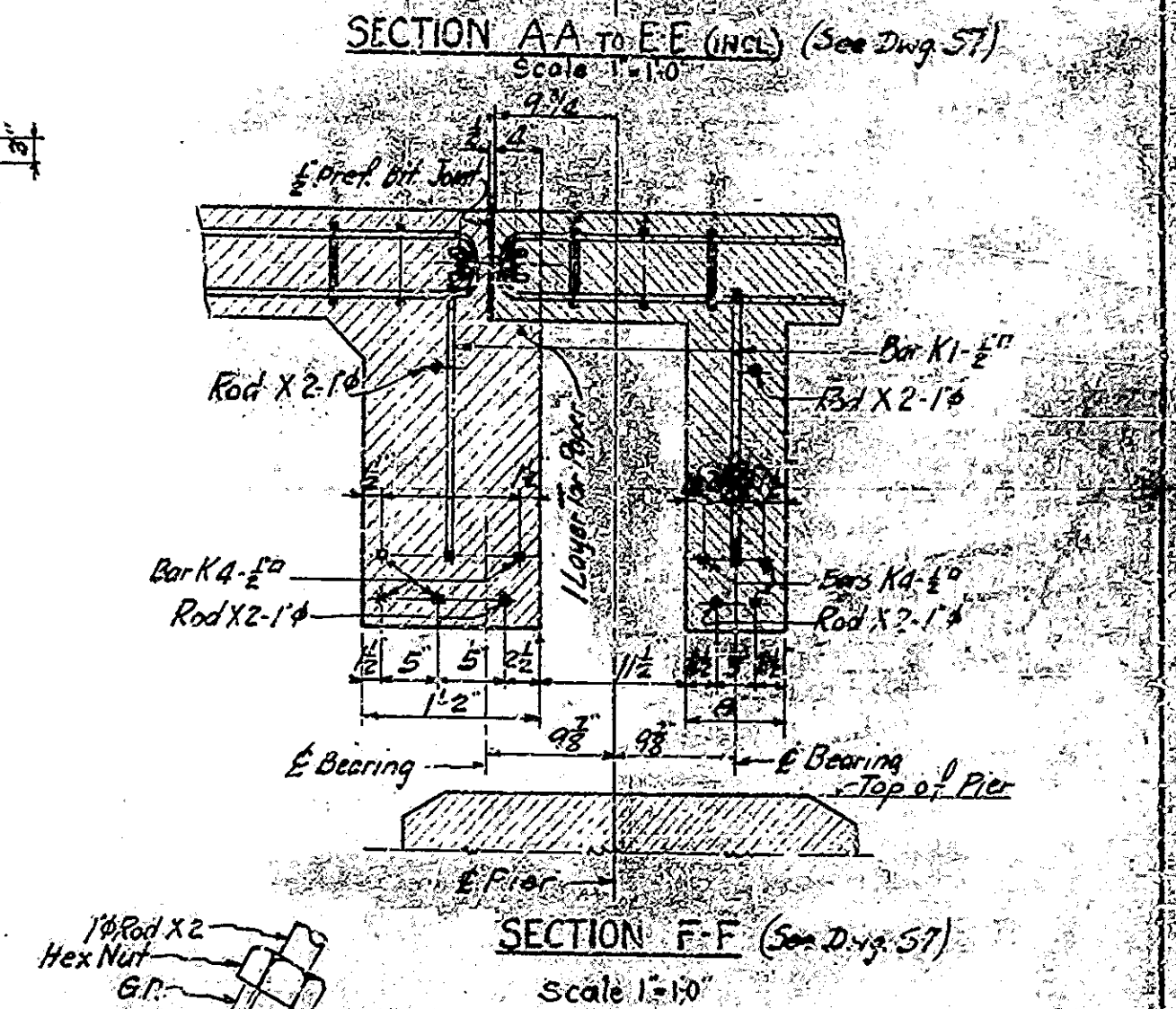
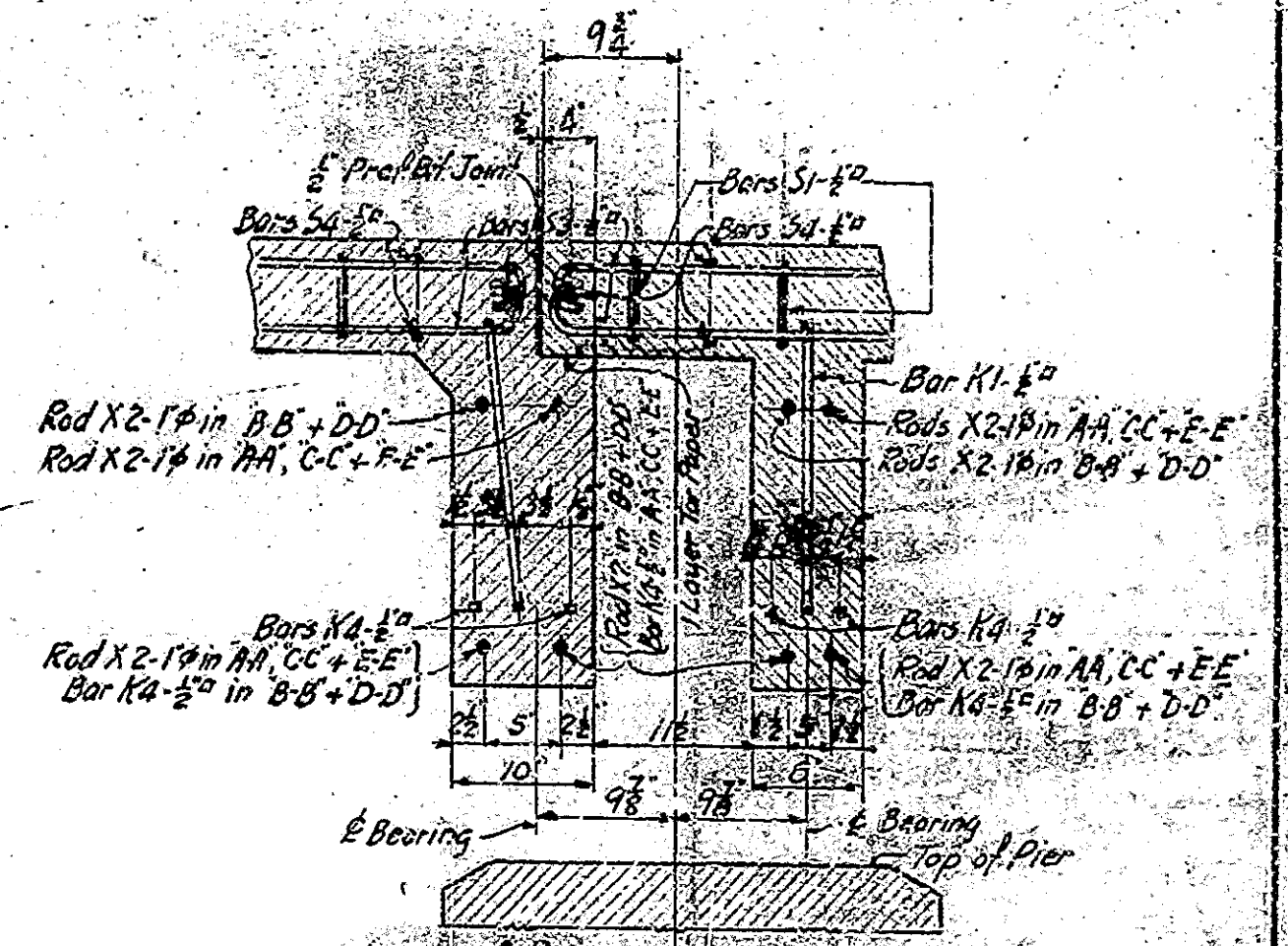
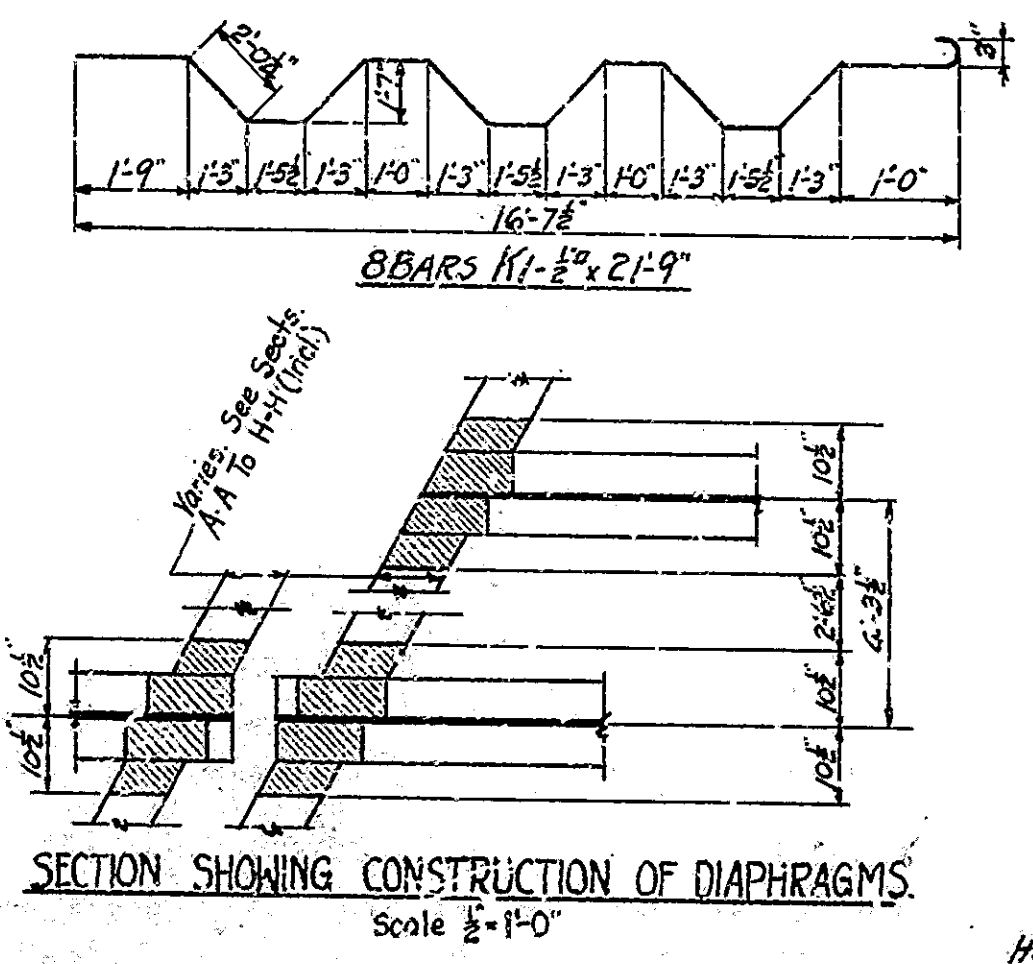
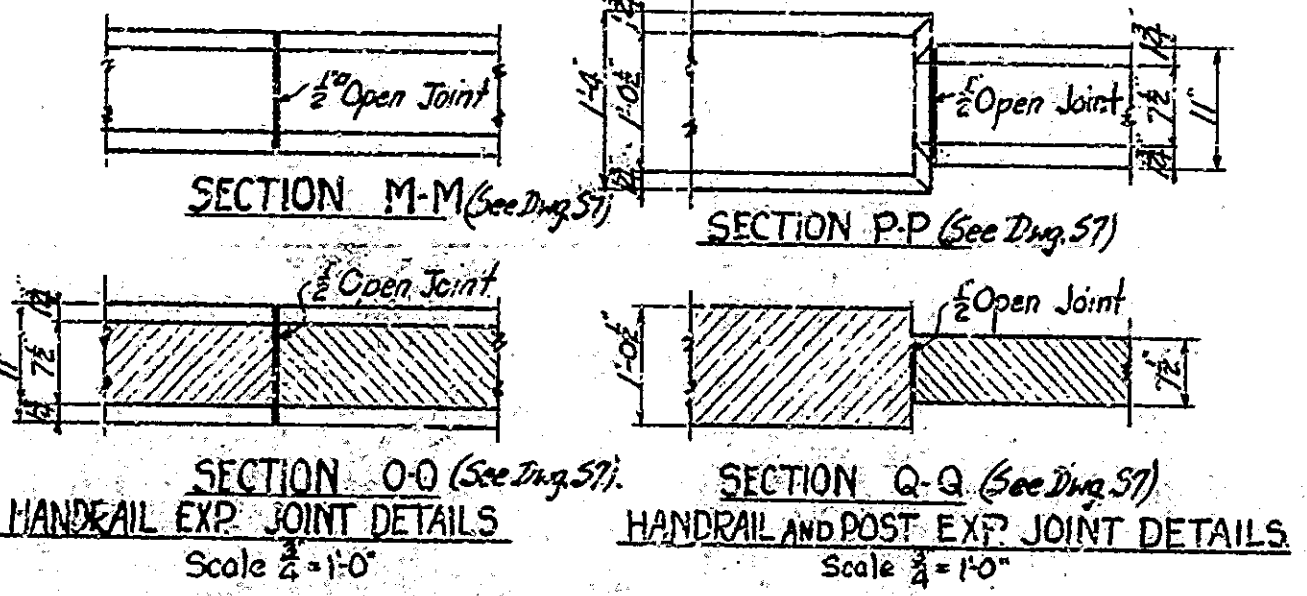
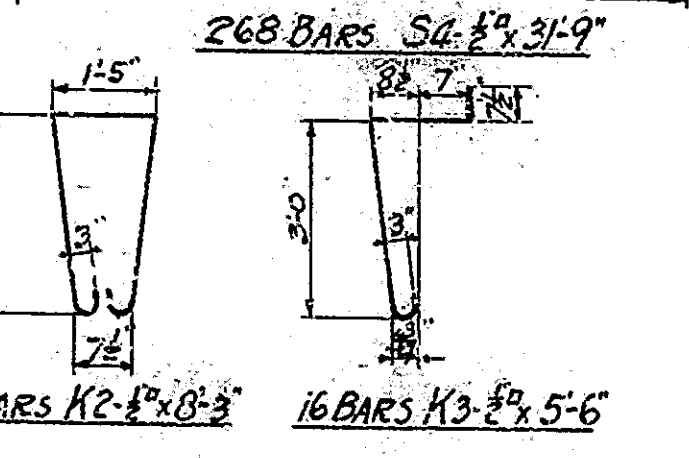
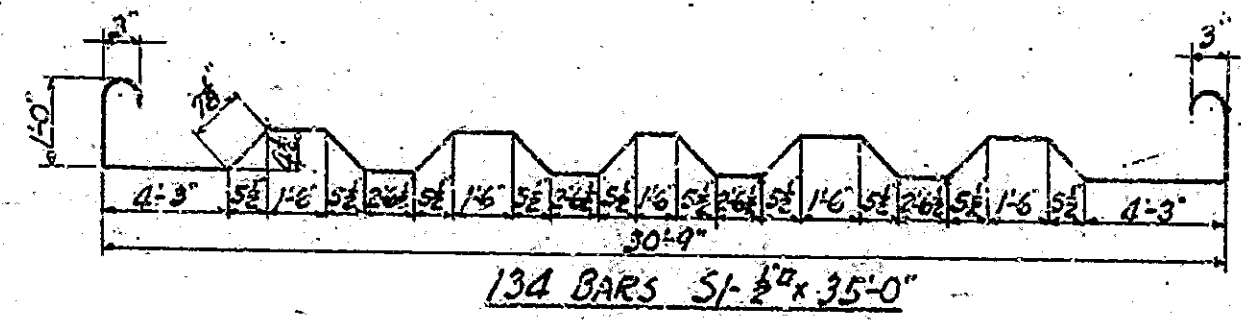
DATE: MAY 16, 1934

BRIDGE FILE 67-E-176A
 BRIDGE CONTRACT NO. 339

DESIGNED BY E. A. ...
 DRAWN BY ...

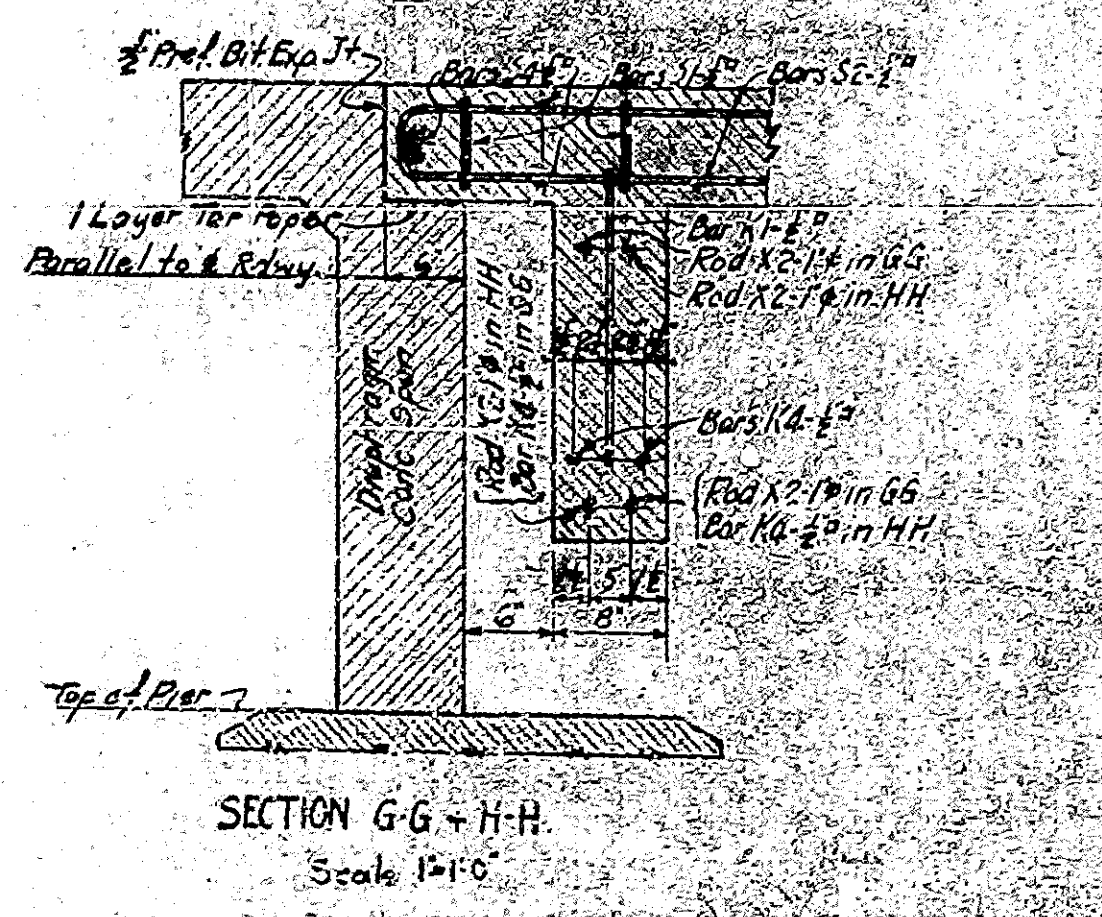


PLAN SPAN "C"
 Scale 3/8"=1'-0"



BILL OF MATERIAL (SPANS B & C)

REINFORCING STEEL						
Mark	No. Bars	Size	Length	Location	Total Length	Weight
C1	16	1/2"	53'-0"	Curb	536'-0"	
C2	16	3/4"	32'-0"		516'-0"	
S1	134	3/8"	35'-0"	Transverse in Slab	4690'-0"	
S2	50	3/8"	33'-0"	Longit	1650'-0"	
S3	50	3/8"	32'-0"		1600'-0"	
S4	268	3/8"	31'-9"	Transv	9509'-0"	
C3	150	2-3	2-3	Handrail	637'-6"	
K1	8	2-1/2"	2-1/2"	End Diaph	174'-0"	
K2	40	8-3/8"	8-3/8"		530'-0"	
K3	16	5-6"	5-6"		33'-0"	
K4	72	5-6"	5-6"		396'-0"	
K5	3	8'-0"	8'-0"	Slab Bars for Bars cut in Hand	24'-0"	
Total #1 Bars					19150'-6"	16469 #
S5	132	3/8"	19'-3"	Handrail	2541'-0"	
S6	150	2-3	2-3		317'-6"	
Tot	3	2-0"	2-0"	Sp. Brs for Bars cut in Top	24'-0"	
Total #2 Bars					2809'-6"	1108 #
CONCRETE						
Class D. Span structure					930 Cu Yds.	
E. Handrail (4.5 Cu Yds)					230 Cu Yds.	
Weight for 1800 5/8"						



SECTION G-G + H-H
 Scale 1/4"=1'-0"

FLOOR DIAPHRAGM DETAILS, BEND DIAGS. AND BILL OF MAT'L'S
STEEL BEAM
AND
REINFORCED CONCRETE BRIDGE
 48 SPANS + WALLS, 597 X 100 IN. DIAPHRAGMS 24' O. ROADWAY
 OVER FISH CREEK OF STATE ROAD 61-F
STATE HIGHWAY COMMISSION OF IOWA
OWEN COUNTY
 SCALE - AS NOTED MAY 18, 1934
 RECOMMENDED FOR APPROVAL
 PROJECT ENR 115 SECTION B STATION 276 + 22.74
 DRAWING 58 OF 5 BRIDGE CONTRACT NO. 334

DESIGNED BY E. C. ...
 DRAWN BY J. E. ...
 CHECKED BY H. C. ...

